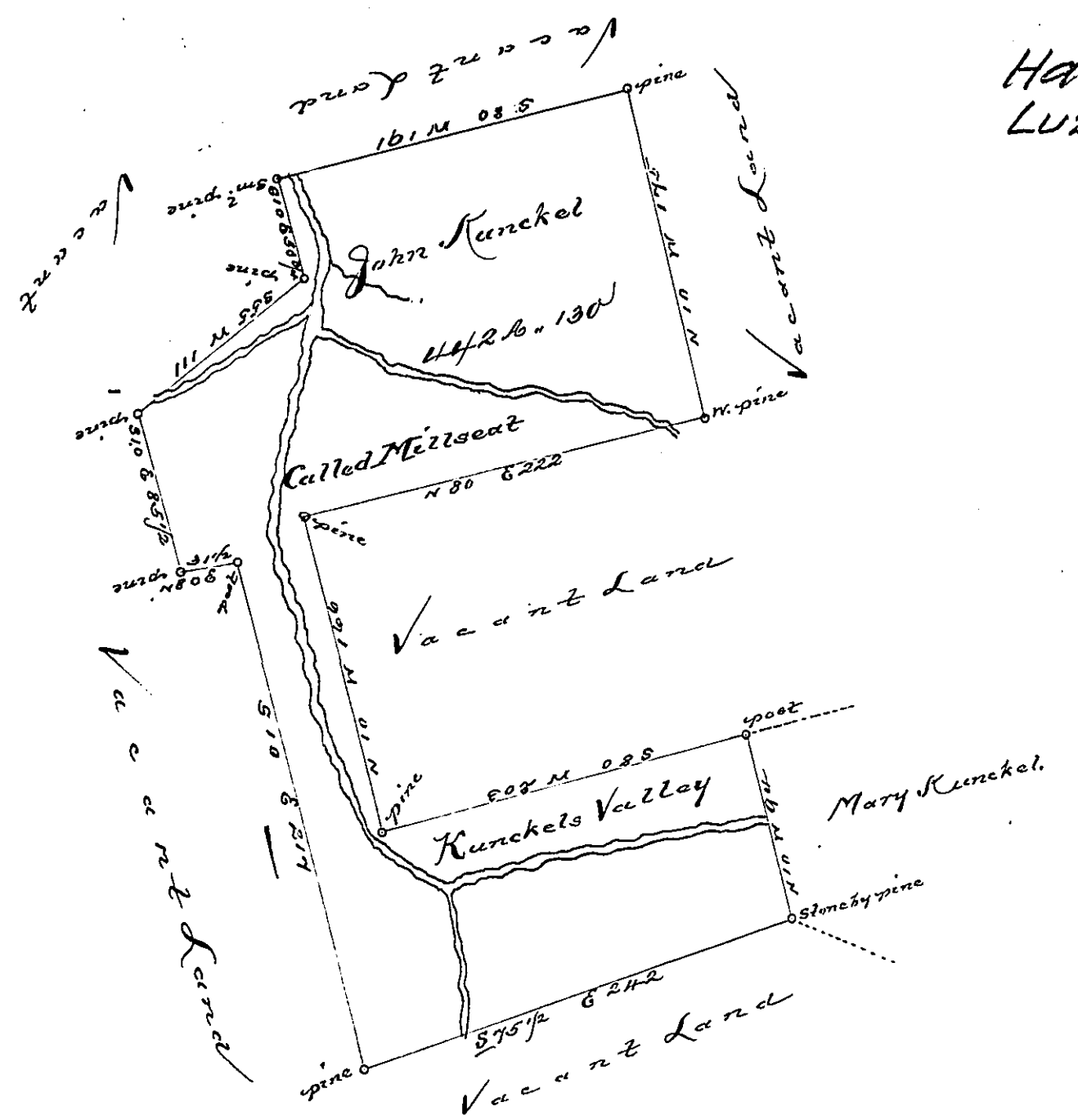


Hazle -
Luzerne



By Virtue of a warrant dated the 5th February 1789, Surveyed
 the eighteenth July 1791 to John Kunckel the above described
 tract of land, Situate on a branch of Black Creek ^{near to Black Creek} in North
 ampton or Northumberland County Containing four hun-
 dred and forty two acres one hundred and thirty perches
 & the allowance of six p Cent R.

Daniel Brodhead Esquire
 Surveyr General.
 p. Geo. Palmer

IN TESTIMONY that the above is a copy of the original remaining on file in the
 Department of Internal Affairs of Pennsylvania, made con-
 formably to an Act of Assembly approved the 16th day of
 February, 1833, I have hereunto set my Hand and caused
 the Seal of said Department to be affixed at Harrisburg, this
 third day of October, 1895.

James W. Latta
 Secretary of Internal Affairs.